

CELEBRATING 200 YEARS

Sharon Lutheran Church
1817-2017



SHARON LUTHERAN CHURCH

FOUNDED 1817

WORSHIP 11A

SUNDAY SCHOOL 10A

M & MURRAY

SHARON LUTHERAN CHURCH

CELEBRATING OUR 200TH ANNIVERSARY

— 1817-2017 —

11:AM OCTOBER 22ND 2017



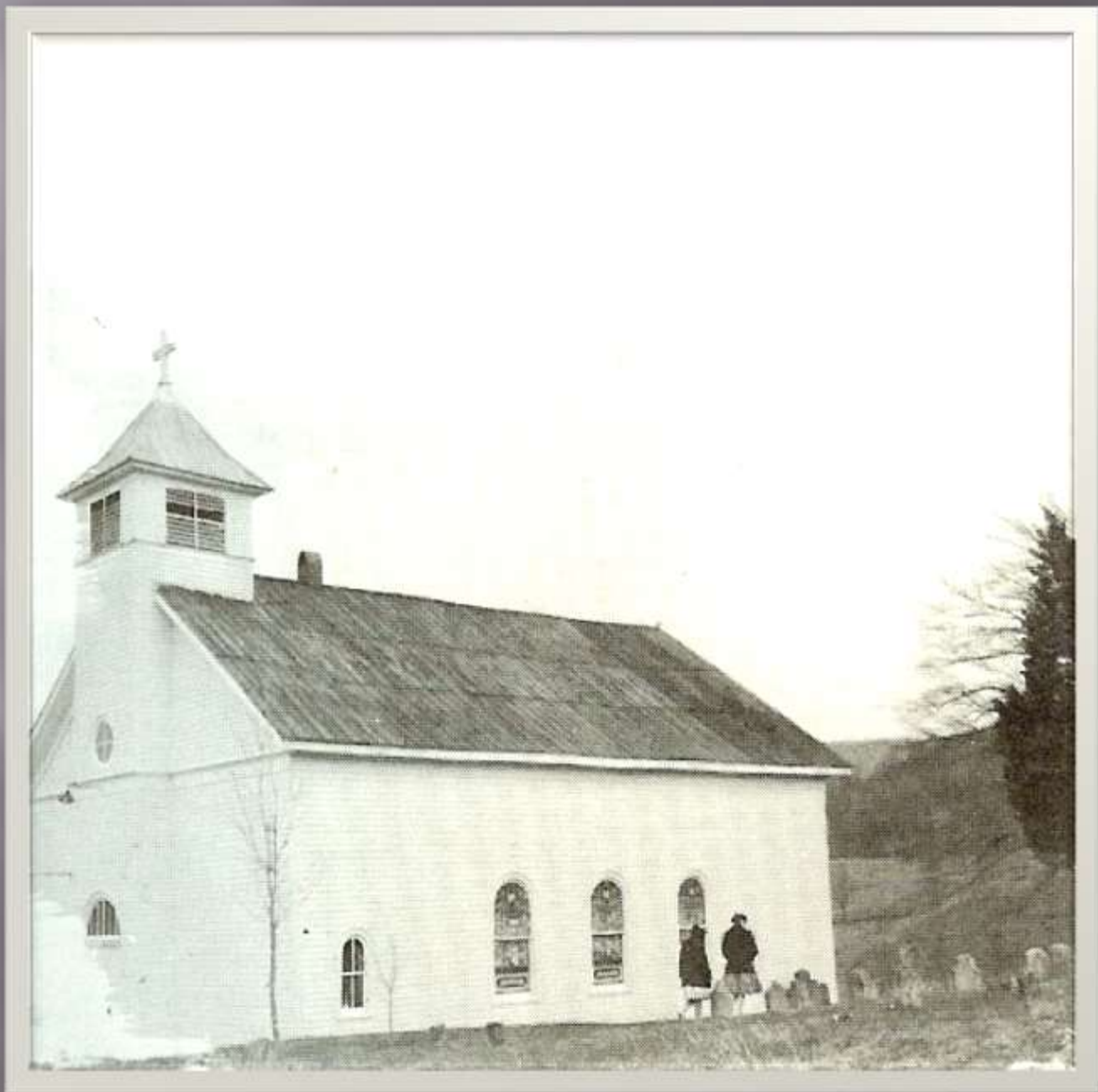
SHARON
LUTHERAN
CHURCH
WELCOMES YOU



CERES VA
FOUNDED 1817

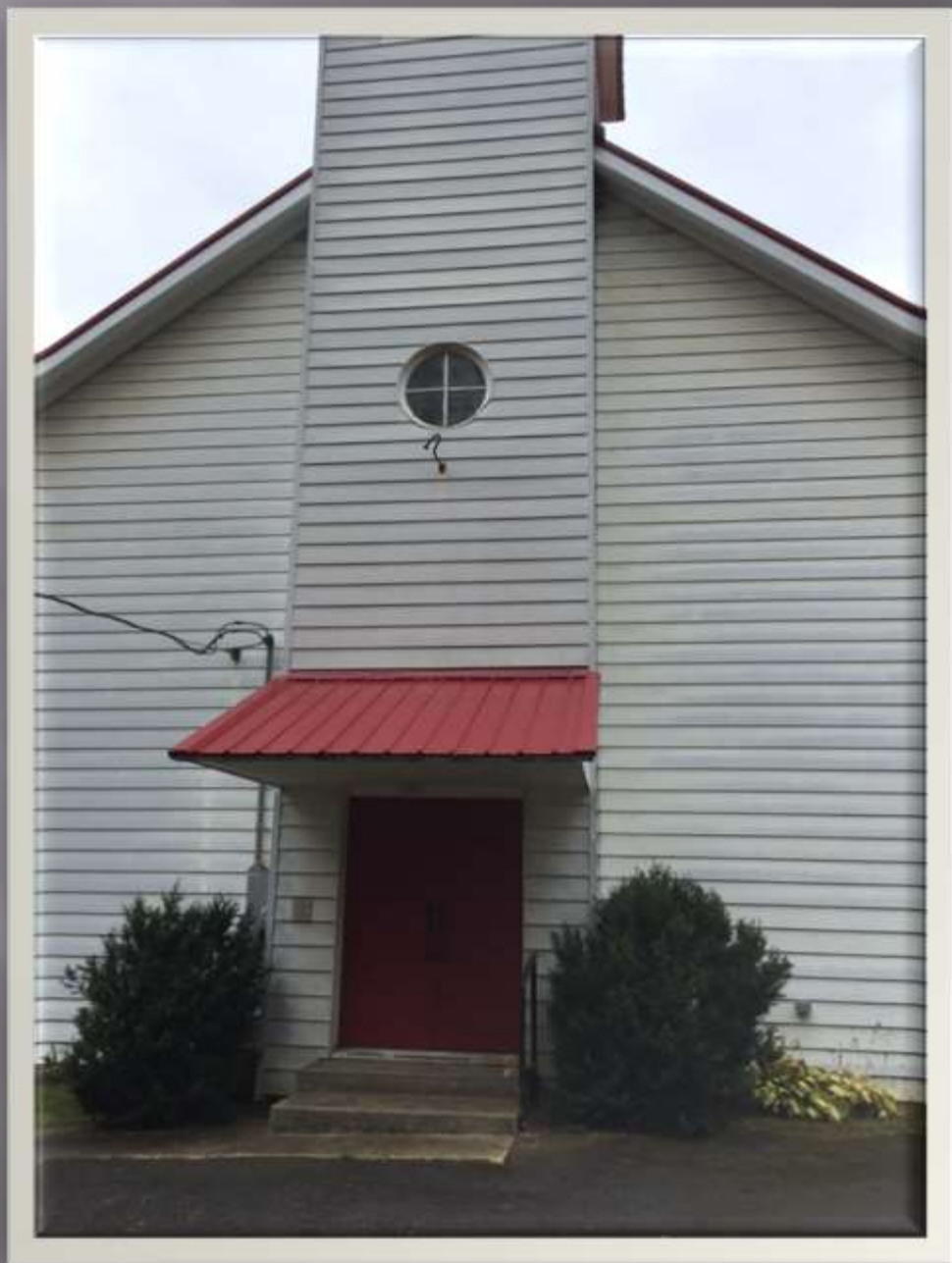




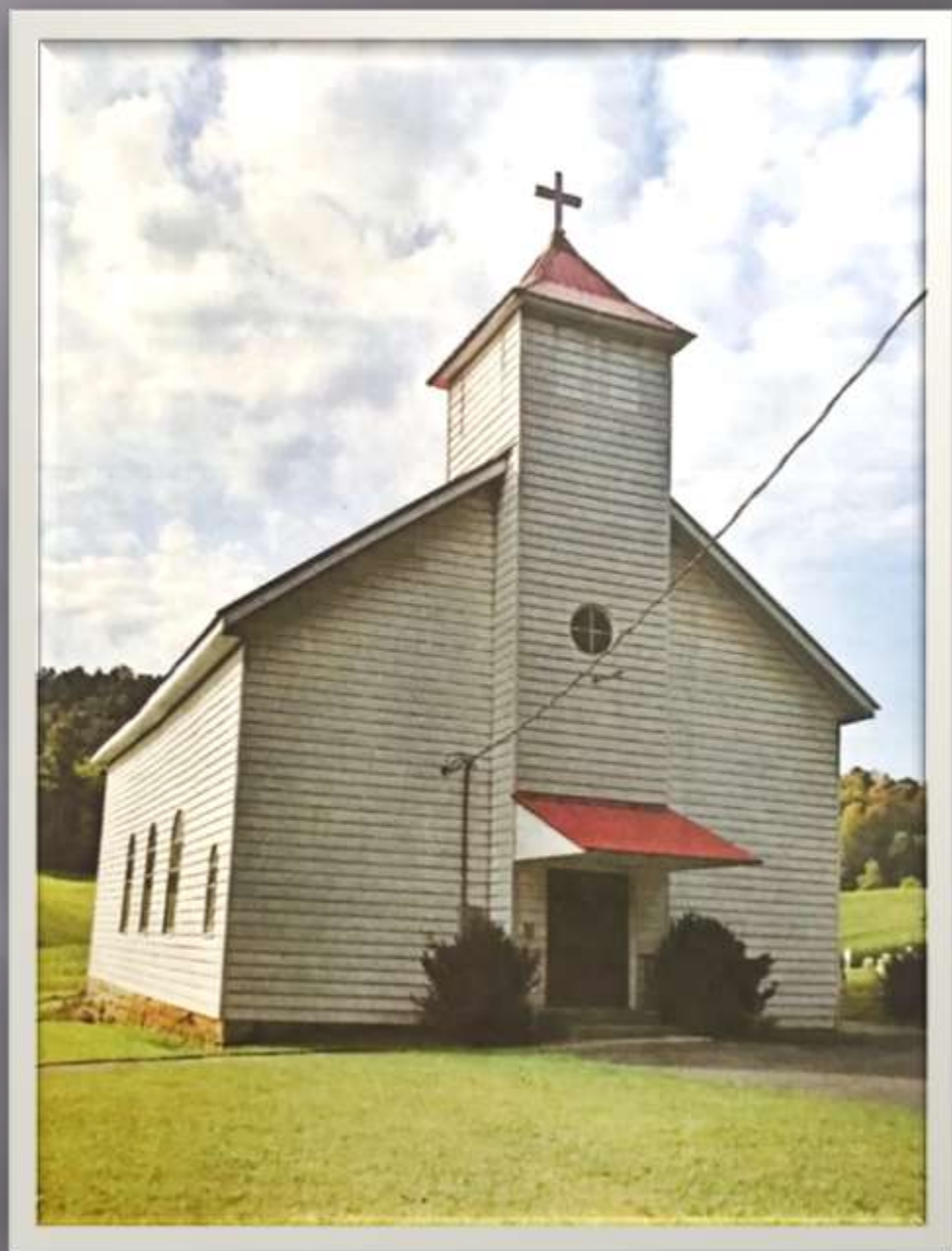














































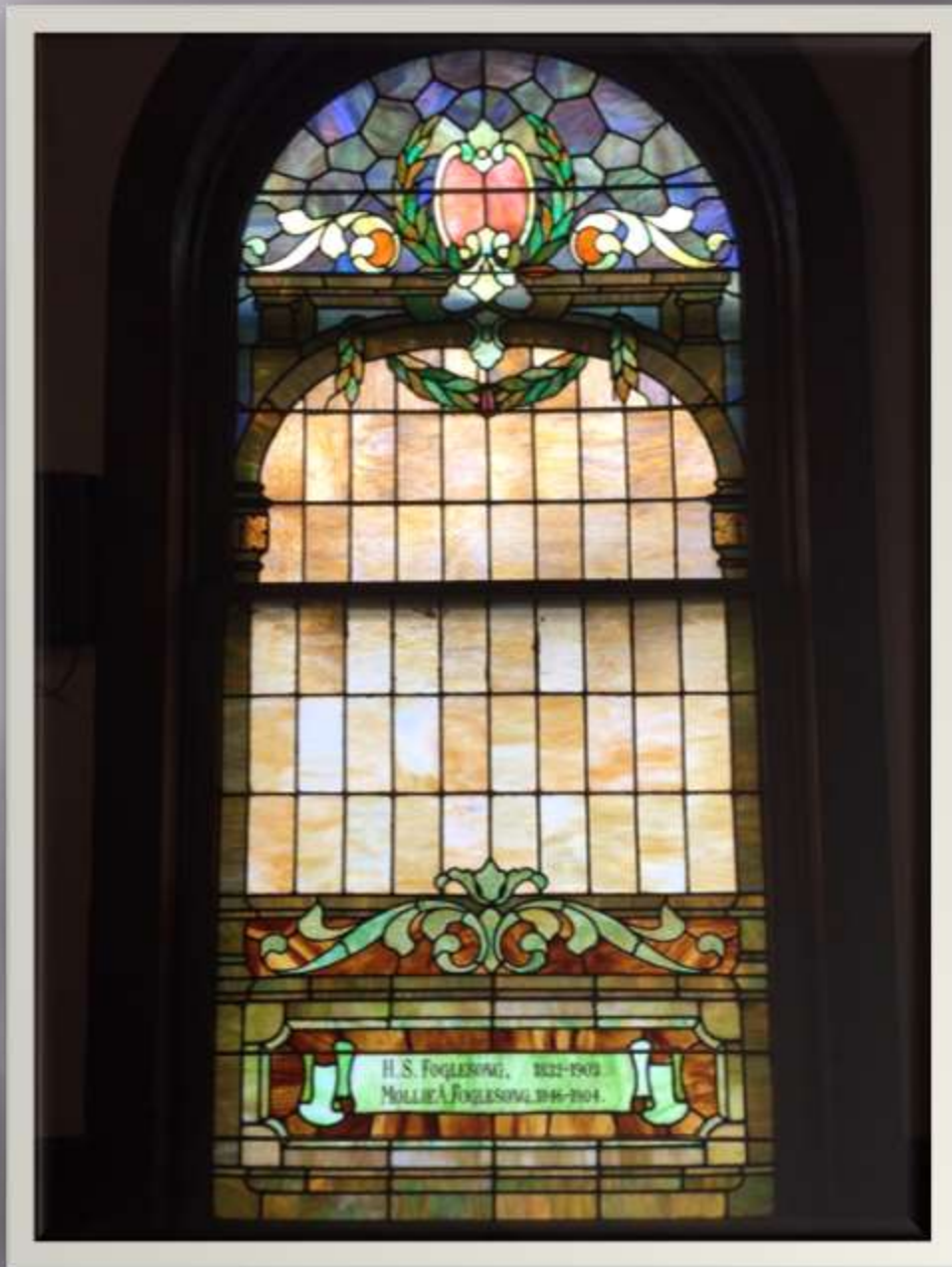








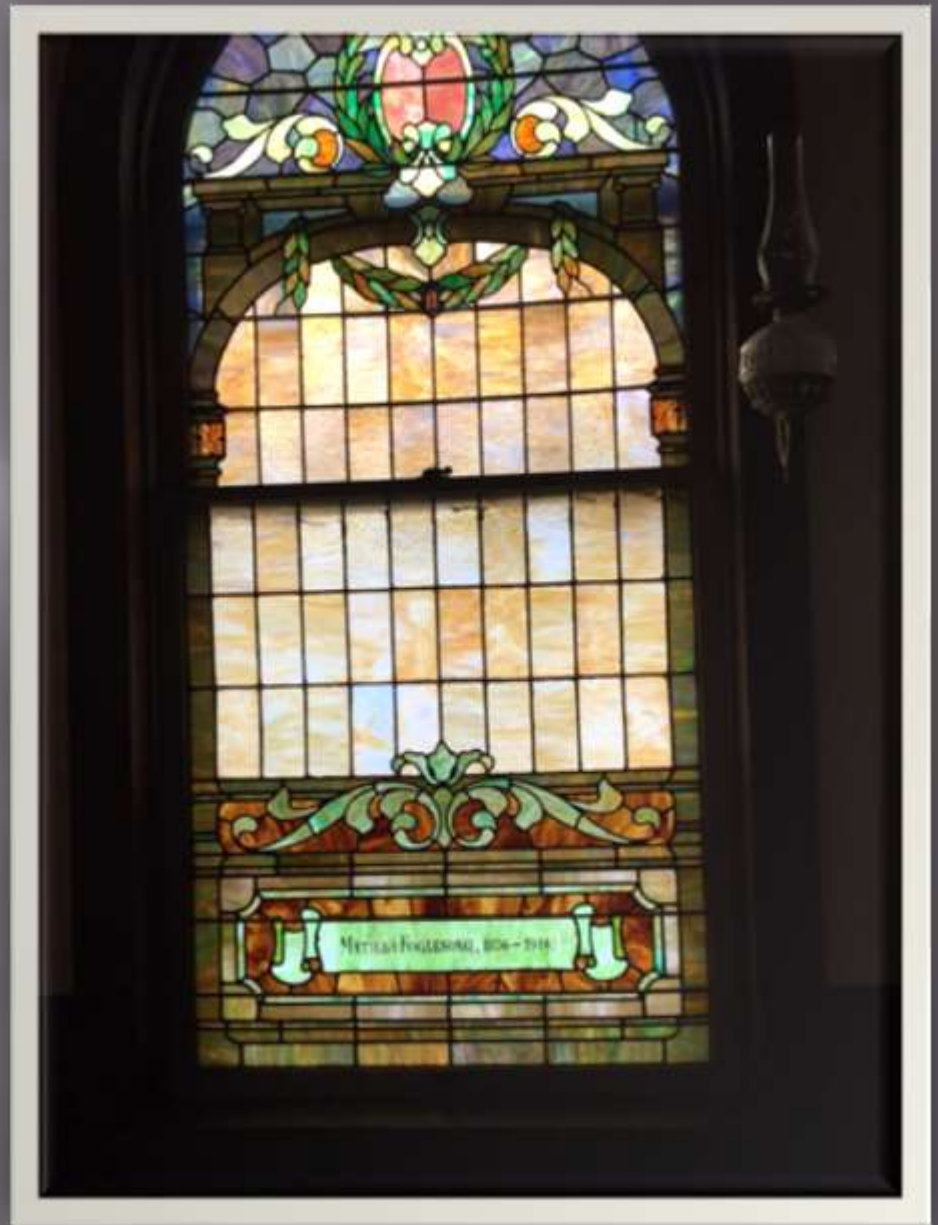


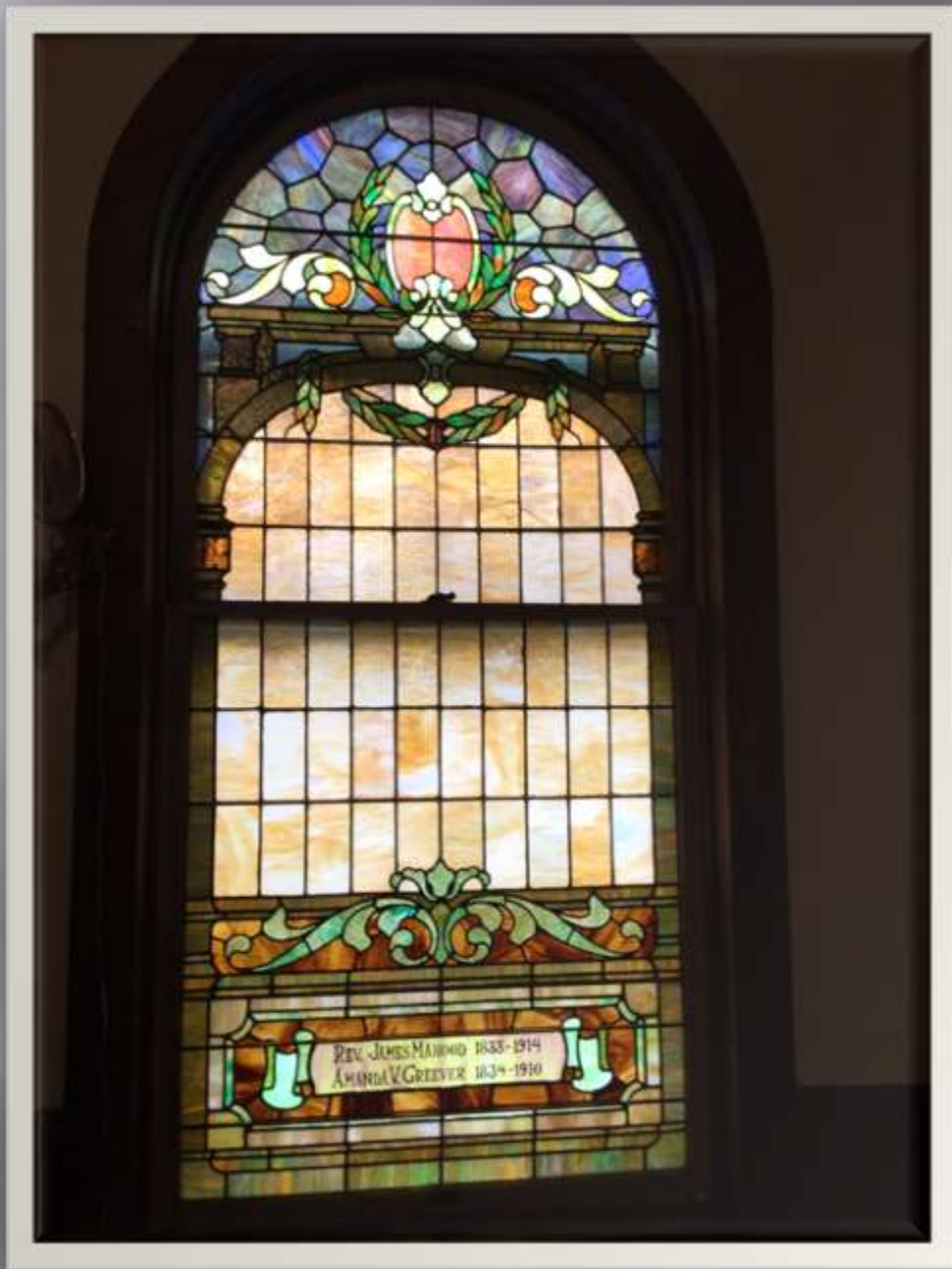


H.S. Foglesong
1832-1903

Mollie A. Foglesong
1846-1904

Matilda Foglesong
1856-1914

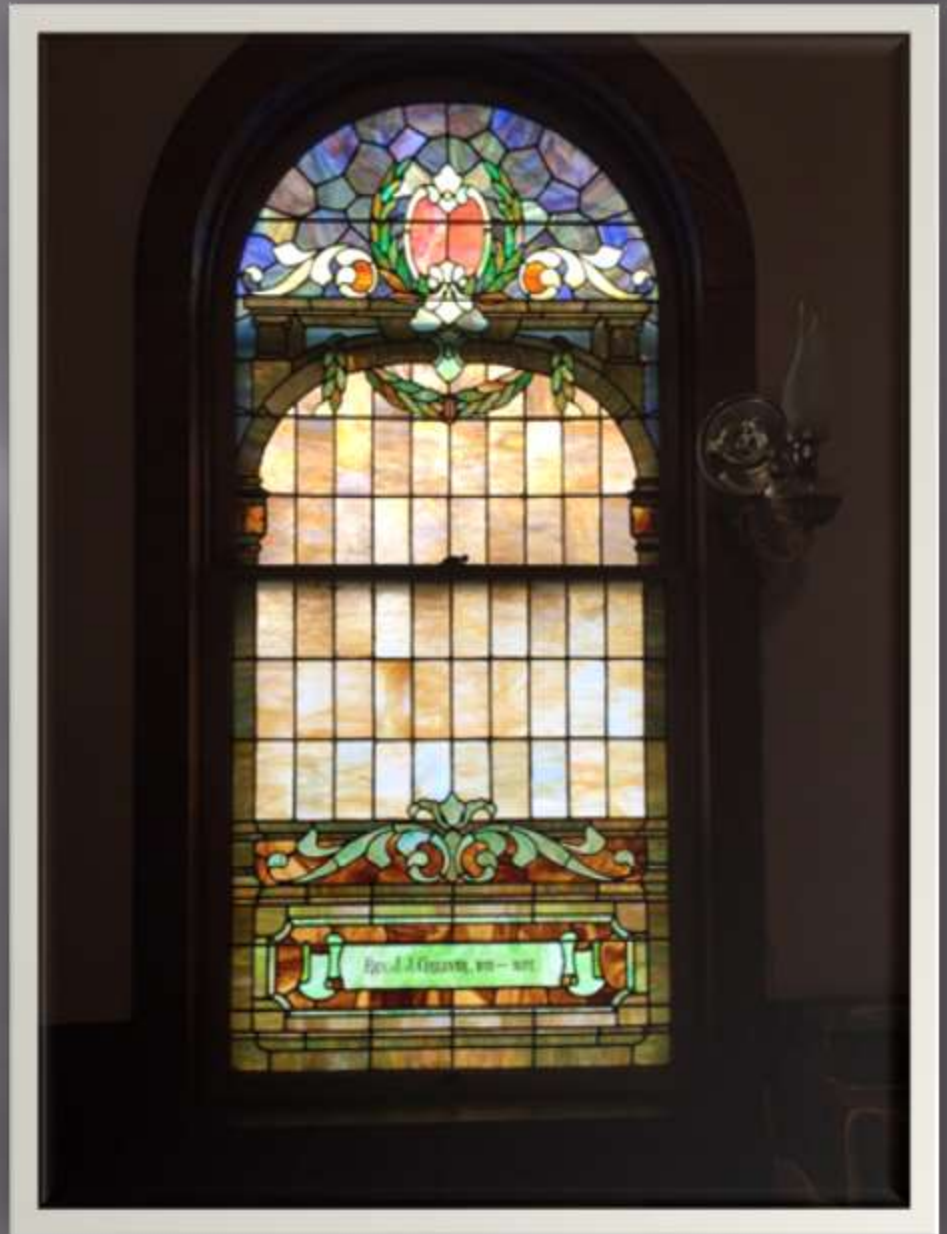


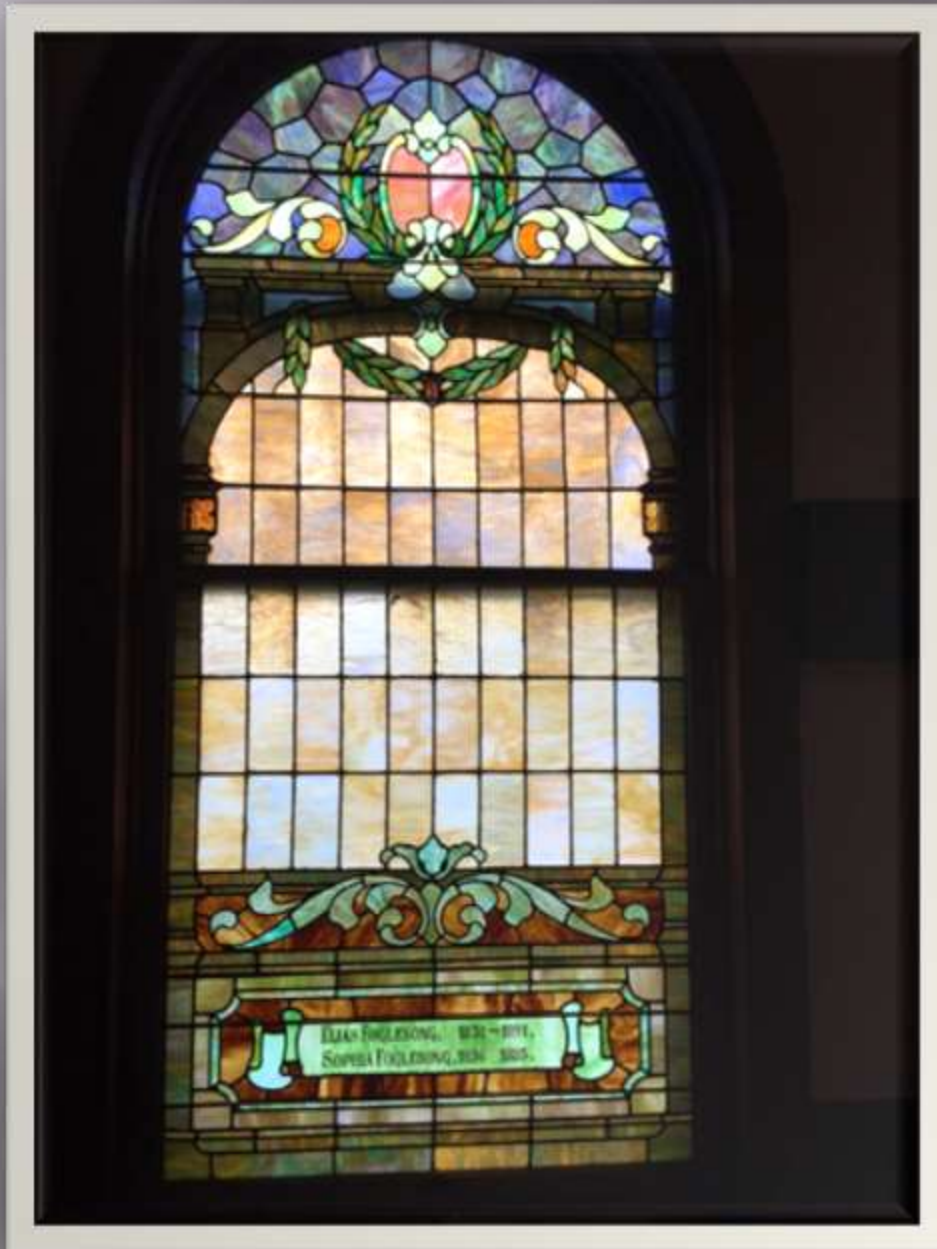


Rev. James Mahood
1833-1914

Amanda V. Greever
1834-1910

Rev. J.J. Greever
1811-1877

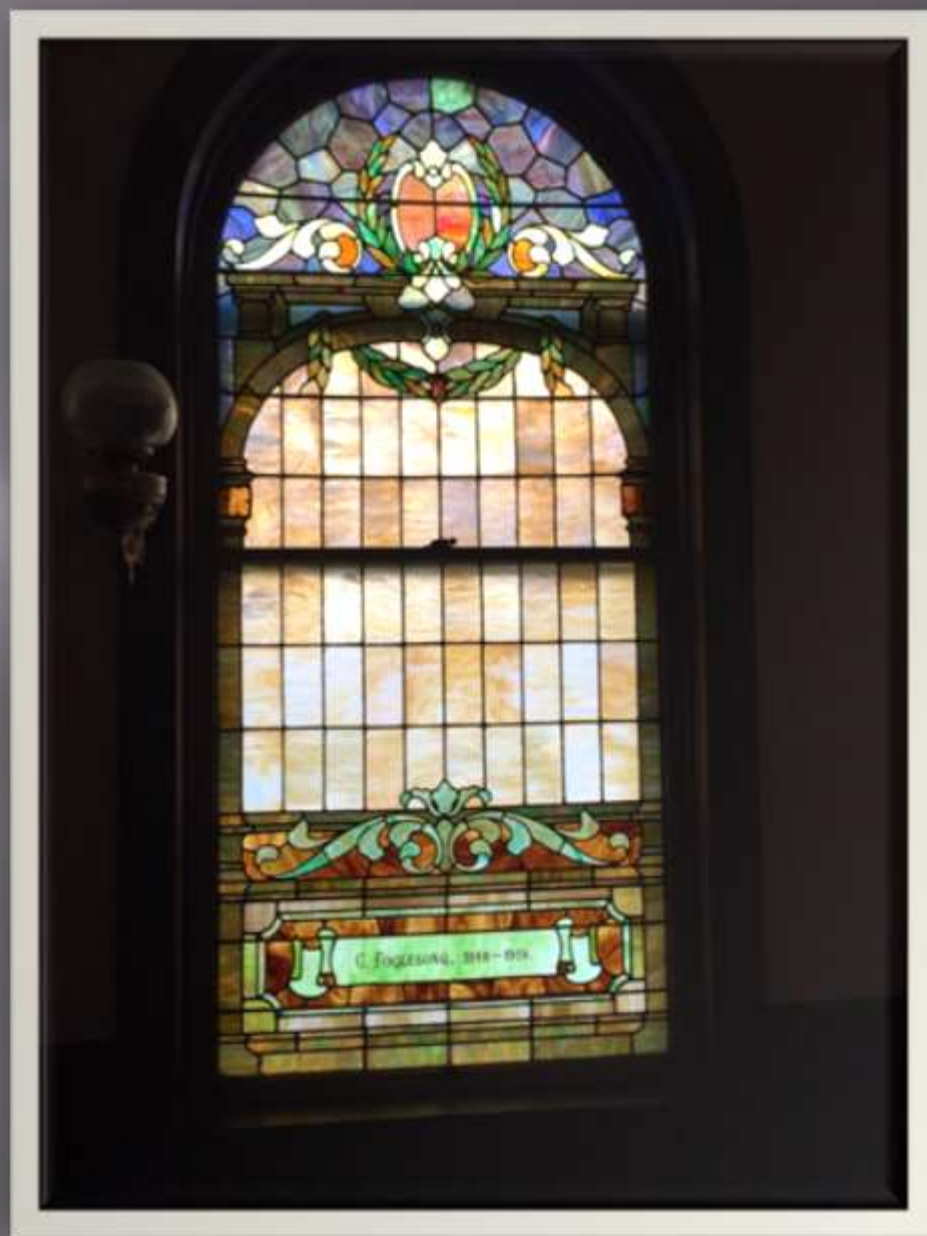




Elias Foglesong
1831-1891

Sophia Foglesong
1836-1885

C. Foglesong
1848-1919





Elias Foglesong



Mary Umbarger
Foglesong

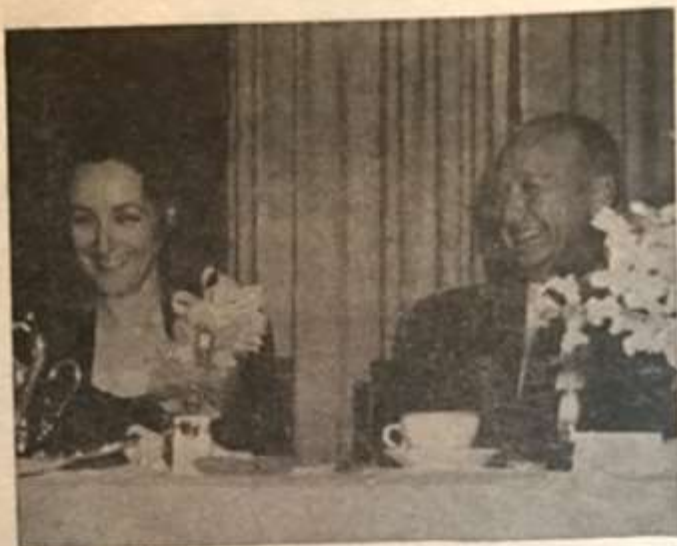


Charles & Ethel Bruch

Christophe
Grandpa Foglesong's family group



Chas. Smith, Va. Studio of Photography



DR. and MRS. JOHN FRAY

On a bright August day he sets sail
To a distant land beyond our dale!
Its cargo - our leader, our friend, our guide.
No longer in him can we confide
But his influence, his example, his life
Linger on to guide us through our strife.



Certificate of Confirmation

This is to certify that

John Vincent Proelcke

having been duly instructed in the doctrines

of the

CHRISTIAN RELIGION

as confessed by the

EVANGELICAL LUTHERAN CHURCH

and having professed faith in our Lord Jesus Christ

and vowed obedience to His Gospel, was received

into full Communion with

Sharon Lutheran Church

Verona, Va.
by the solemn rite of

CONFIRMATION

on the *19* day of *October* A. D. *1969*

Albert J. Schumate
PASTOR



















1700
1700
148
404
293















FATHER

PETER

GROSECLOSE

BORN

GERMANY

1730 - 1803

REV. 1993





MASSACRE OF THE SLUSS FAMILY BY SHAWNEE INDIANS AUGUST 2, 1774

TO BE REMEMBERED BY THESE MANY VETERAN SOLDIERS OCCASIONALLY
PLACED HERE OFFER THE MEMORY OF JESSE SLUSS AND HIS WIFE CHRISTINA
AND THREE OF THEIR SEVEN CHILDREN; JESSE SLUSS WAS KILLED IN 1774
AND THREE WERE OVERLOOKED IN A BATTLE AT THE END OF THEIR HOME
WHICH HAD BEEN BUILT HERE A GOOD SPREAD, NOW KNOWN AS SLUSS
SPRING; SOME THREE HUNDRED YEARS EARLY OF THE PRESENT HOME
OF MISS AND MRS. SHIFFLET. WITH THE YEARS OF JESSE SLUSS HOME
IN THESE WOODS TO FOREVER BURIED AND REMEMBERED THAT WE HONOR
THE EVERLASTING/ CONSIDERABLE MEMORY OF JESSE AND HIS WIFE
OF SEVERAL YEARS AGO IN THIS PLACE AND HIS WIFE CHRISTINA
OVERSEASING OURSELVES, EARLY OVER THE END WHOSE REMEMBERED
THEir LIFE, WAS WELL AS HIS WIFE TO BRING OF A BATTLE WITH
JESSE SHE LOOKED AHEAD AND BEING ALONE, AND A BATTLE, WENT
TO HIS REScue AT THE COST OF HER OWN LIFE, BRINGING HER TO BRUCE
AND JESSE THE FORT TO GIVE THE BATTLE WITH A BATTLE BATTLE
BATTLE SHE DROVE OFF THE BRUCE, SHE WORTHY OLD MISS SLUSS
WAS DISCOVERED WHERE HER WIFE AND BATTLE HER IN HER VETERAN
AND BATTLE THE END UNDER A HIGH TREE POINT AND OVERLOOKED
BY THE BATTLE, BATTLE BY BATTLE, BATTLE, SHE BATTLE BATTLE
BATTLE AND LIVED TO THE END OF THE END OF THE VETERAN IN
BATTLE IN BATTLE BATTLE OF BATTLE BATTLE.

ERECTED AND DEDICATED BY COL. JESSE SLUSS (DIED 1774) AND HIS WIFE
CHRISTINA BATTLE OF BATTLE BATTLE

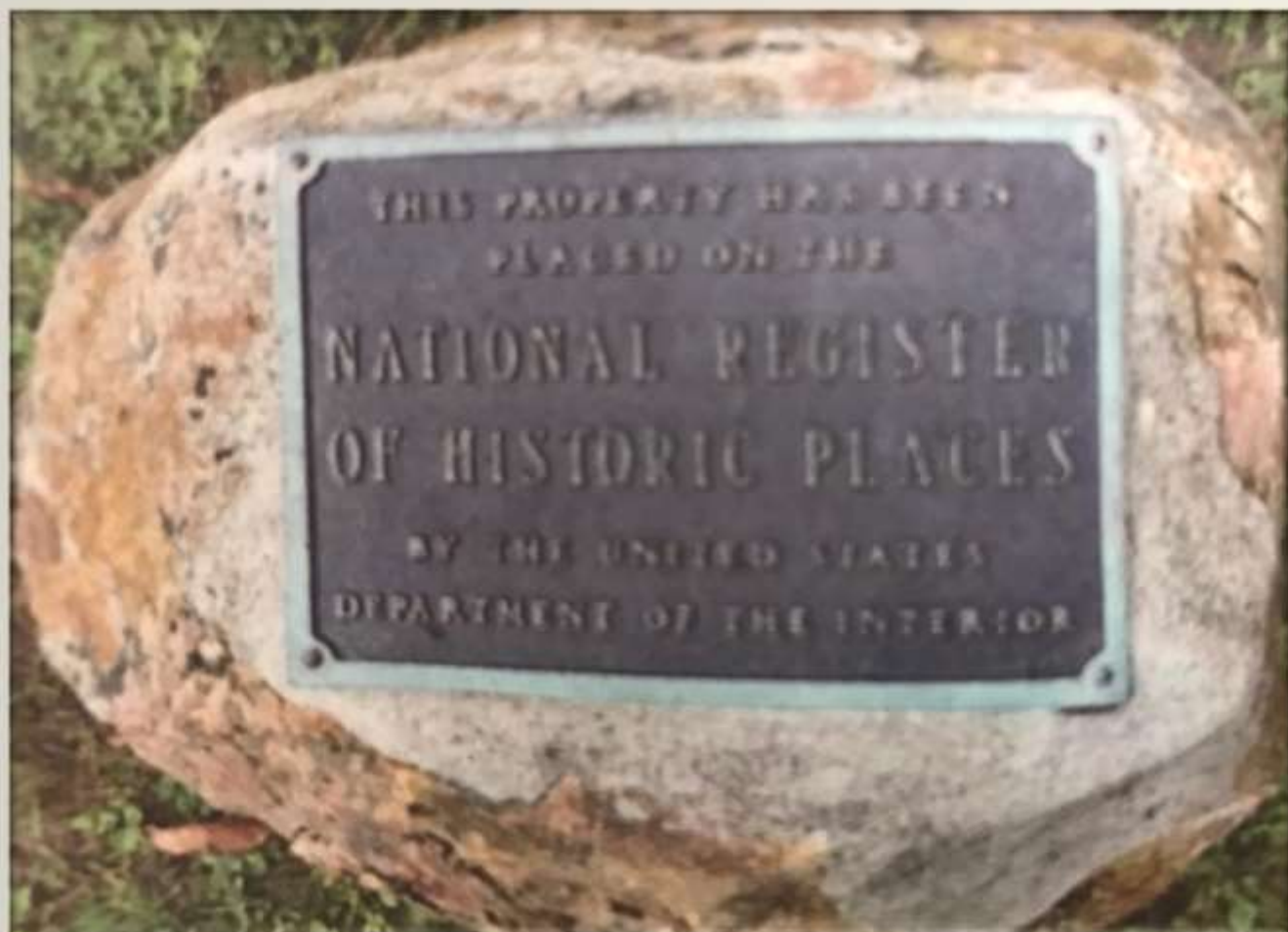


SHARON LUTHERAN
CHURCH & CEMETERY

have been registered as a

Virginia
Historic
Landmark

pursuant to the authority vested in the
Virginia Historic Landmarks Commission
Act of 1966



THIS PROPERTY HAS BEEN
PLACED ON THE
NATIONAL REGISTER
OF HISTORIC PLACES
BY THE UNITED STATES
DEPARTMENT OF THE INTERIOR

PROPERTY OF

SHARDN —

LUTHERAN
CHURCH

— CERES —

VA - BLAND, CO

*entire parish (land 1870) bought his book in 1870
Rev. Augustus A. Berg, Oland from United Lutheran Pub. House
(copy signed by Rev. Berg)*

VOLUME

PARISH REGISTER

*of The Bland-Wythe Lutheran
Parish (Bland-Wythe County)*

Beginning, A.D. *1839 January 1st*
Ending, A.D. *1925 June 1st*

Arranged and Compiled by the Statistical and
Church Year Book Committee of the United
Lutheran Church in America

Edited by George H. Scher, D.D., Chairman of Committee

THE UNITED LUTHERAN PUBLICATION HOUSE
MULLENBERG BUILDING, PHILADELPHIA, PA.

The
 Membership List Page 50
 Officers " 64
 Council meetings " 70
 Baptized members 55
 Membership List last up to date so far
 as I can get it, page 74

1947
 Membership List 76
 Council Minutes 77
 Member Communion 78
 Council Meetings 82

Sharon Sunday School
 See page 109th of List of the names
 of pairs who paid for Sunday School
 Literature & papers etc. 210-211

 Organization of S.S.S. April 1880

 See a list of names of Partners & Co
 aid in building Sharon Church

 See Treasurer's account in
 of April 29th 1887

 For the Sharon Christian Endeavor
 Society see Page 8 & 9.

His Companion was born in
Switzerland Canton Zurich
on the 27 day of August 1732
received the name of Magdalena
in Holy Baptism. Her parents were
Jacob Ott & Elizabeth

She departed this life on the 27
day of October 1805 aged 73 years
2 months

The above was entered in the
book on the 27 Dec. 1805

Supposed by Rev J. H. H. H.

Translated by J. H. H. H.
Jan 15 1879

Translation of the German on this
page

Extract from the certificate of baptism
of the deceased Peter Bräsele
who was born in Germany
in the Duchedom Sigen about
his birth place was Wisconsin
on the 23 day of February 1730
and baptized in the name of the
Holy Trinity.

He left the land of his native
on the first day of May 1750
and came to America where
he lived until his 74 year
when he departed this life for
the life Eternal

His Companion was born in
Switzerland Canton Zurich
on the 27 day of August 1732
received the name of Magdalena
in Holy Baptism. Her parents were
John Jacob Ott & Elizabeth
She departed this life on the

70

At a meeting held by the Congre-
gation of Sharon Church April 25th 1880
(For the purpose of organizing a Sunday
School) Rev. Bruce acted as chairman.
On motion Mr Rufus Crabtree was elected
Superintendent, and Mr Isaac Hudson
Assistant Superintendent, J. M. Hudson
Secretary & J. H. Crabtree Librarian.
After a few remarks by Rev. Bruce, the
Congregation was dismissed.

J. M. Hudson Sec.

Pastors of Sharon Lutheran Church

- ▣ G. D. Fhohr
 - c1799-1826
- ▣ Nehemiah Bonham
 - C 1826-35
- ▣ Jacob Scherer
 - C1835-41
- ▣ J.J. Greever
 - 1842-55
- ▣ Stephen Rhudy
 - 1855-73
- ▣ J.A. Brown
 -
- ▣ J.A. Mahood
 - 1874-79
- ▣ J.B. Greever
 - 1880-81
- ▣ H.E. Bailey
 - 1880-81
- ▣ J.W.S. Sheppard
 - 1882

Pastors of Sharon Lutheran Church

- ▣ J.A. Mahood
 - 1882-86
- ▣ J.A.B Scherer
 - 1888
- ▣ D.B. Groseclose
 - 1888-90
- ▣ E.H. Studebaker
 - 1889-90
- ▣ J.W. Strickler
 - 1890-94
- ▣ J.A. Mahood
 - 1894-95
- ▣ G.W. Cassell
 - 1896-98
- ▣ R.R. Sowers
 - 1900-03
- ▣ P.H.E. Derrick
 - 1905-07
- ▣ J.L. Smith (S)
 - 1909

Pastors of Sharon Lutheran Church

- ▣ M.D. Huddle
 - 1910-13
- ▣ J.L. Deal
 - 1915-17
- ▣ O.F. Blackwelder (S)
 - 1918-19
- ▣ P.C. Sigmon (S)
 - 1920
- ▣ E.H. Seckinger (S)
 - 1921
- ▣ Vacant
 - 1921-30
- ▣ R.L. Booze
 - 1930-41
- ▣ J.A. Snyder
 - 1942-44
- ▣ J.H. Koch, Jr. (S)
 - 1946-47
- ▣ A.K. Hewitt (S)
 - 1947-49

Pastors of Sharon Lutheran Church

- ▣ Jacob Young
 - 1950-51
- ▣ Johan Suurkivi
 - 1953-54
- ▣ Karl Laantee
 - 1955-56
- ▣ R.S. Kluttz
 - 1960-62
- ▣ Dr. John Fray
 - 1960-66
- ▣ Eugene Copenhaver
 - 1963
- ▣ A. Shumate
 - 1967-83
- ▣ Jim Johnston
 - 1980-81
- ▣ Henry Liskey
 - 1981-81
- ▣ Dale Higgs
 - 1982-82

Pastors of Sharon Lutheran Church

- ▣ Susan Springer
 - 1983-84
- ▣ J. Allen Snyder
 - 1984-89
- ▣ John Strecker-Baseler
 - 1990-91
- ▣ Harry Dyer
 - 1991-92
- ▣ Frank Lyerly
 - 1992-97
- ▣ Murray Ziegenfuss
 - 1998-2001
- ▣ Joel Thorton
 - 2002-2004
- ▣ Kathy Haga
 - ▣ 2005-2011
- ▣ James Bangle
 - ▣ Current
- ▣ Murry Ziegenfuss
 - ▣ Current